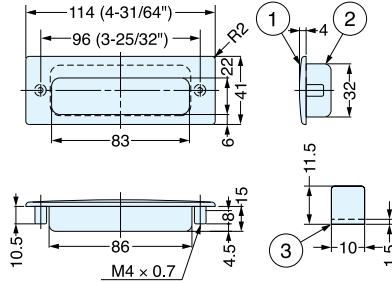


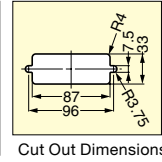
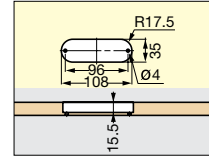
RECESSED PULL



HH-KS



- All-stainless steel model ideal for harsh and high corrosive environments.

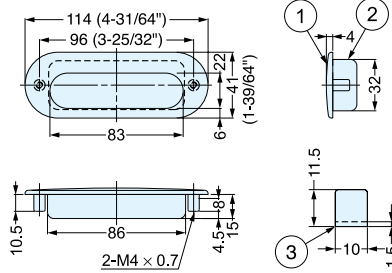


Item No.	Finish	Weight (g)	Box (pcs)	Carton (pcs)	No.	Part Name	Material	Finish
HH-KS 114M	Mirror	110	10	60	①	Face Plate	316 Stainless Steel	Mirror/Satin
HH-KS 114S	Satin				②	Case	304 Stainless Steel	Satin
					③	Spacer		-

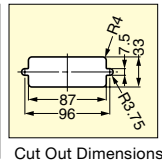
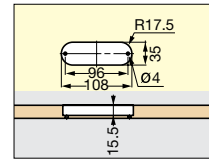
RECESSED PULL



HH-DS



- All-stainless steel model ideal for harsh and high corrosive environments.

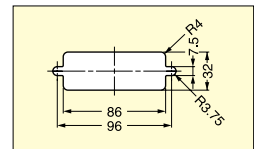
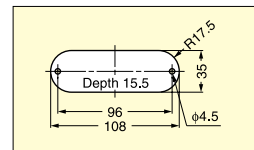
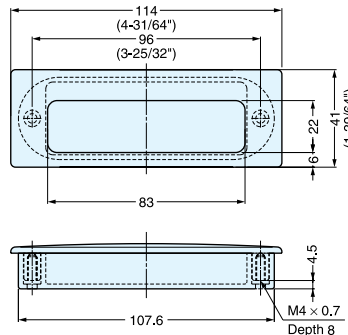


Item No.	Finish	Weight (g)	Box (pcs)	Carton (pcs)	No.	Part Name	Material	Finish
HH-DS 114M	Mirror	105	10	60	①	Face Plate	316 Stainless Steel	Mirror/Satin
HH-DS 114S	Satin				②	Case	304 Stainless Steel	Satin
					③	Spacer		-

RECESSED PULL



HH-K



Put sheet metal between front and back part for sheet metal applications. (Max. sheet metal thickness: 2 mm)

Item No.	Weight (g)	Box (pcs)	Carton (pcs)	Material	Finish/Color
HH-K	90	10	60	316 Stainless Steel	Mirror
				ABS	Black