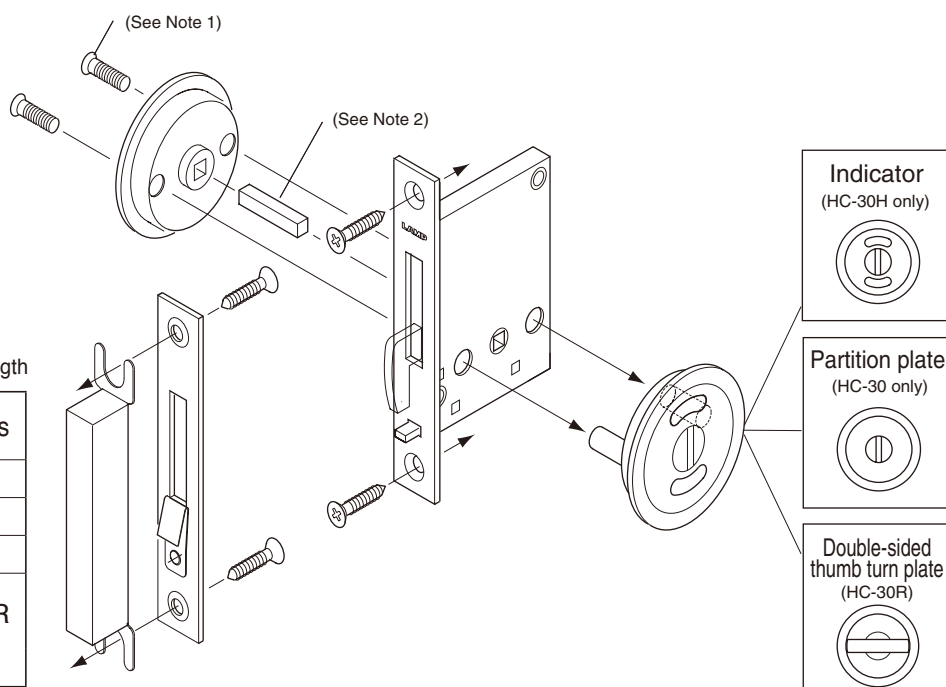


Please read this instruction sheet carefully for proper installation and operation. This instruction sheet should be kept after installation.

Parts composition

Check that the package contains items shown below.



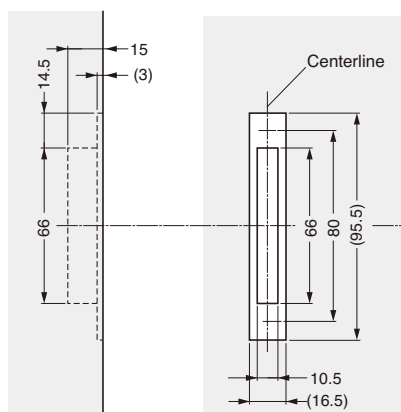
Note 1, 2: Door thickness, screw length and spindle length

Door thickness	Screw length	Spindle length	Remarks
28~31	12	23	
32~36	17	27	
37~40	22	32	
41~44	25	35	HC-30R only
45~48	27	39	
49~52	32	43	

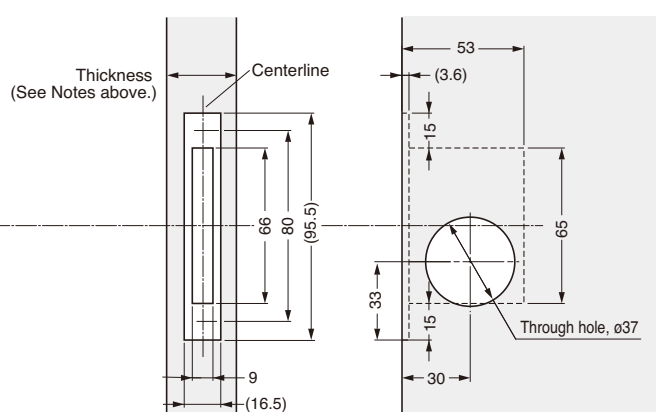
Door jamb and door preparation

Refer the below drawings for your notch working correctly.

Mounting frame and Mounting plate (Door jamb)

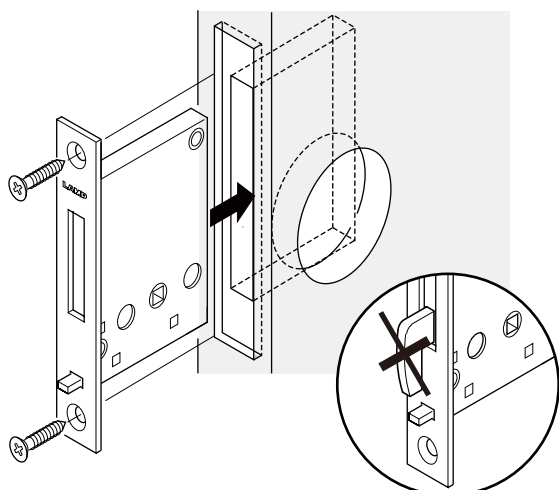


Latch body (Sliding door side)

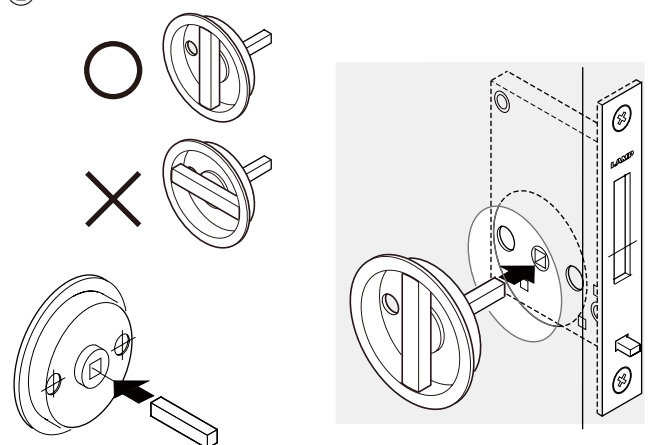


■ Installing procedures

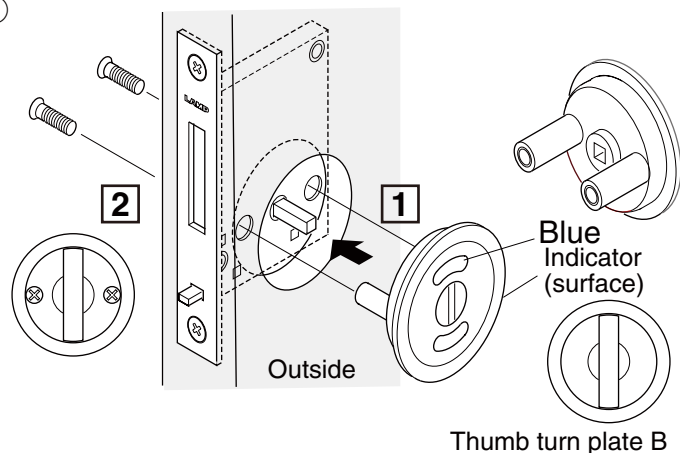
①



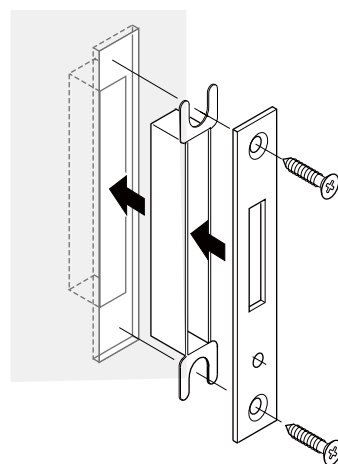
②



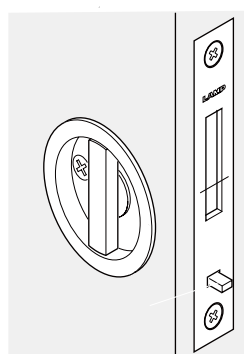
③



④

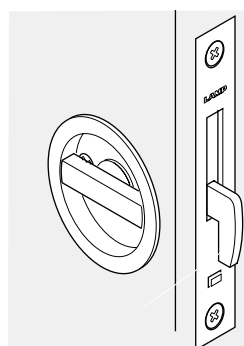
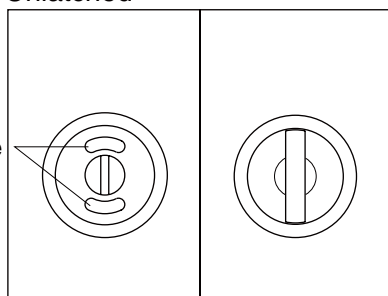


■ Checking the operation of Latch



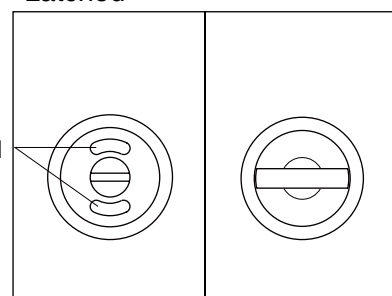
“Unlatched”

Blue

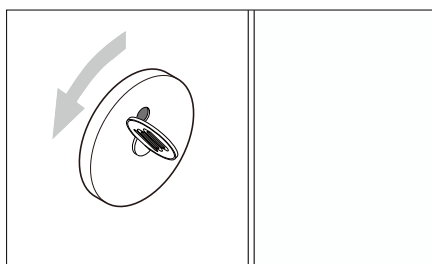


“Latched”

Red



■ EMERGENCY OPENING



Sugatsune is not liable for any damage or injury caused by improper installation or operation.

SUGATSUNE KOGYO CO.,LTD.
Phone: +81 3 3866 2260
F a x : +81 3 3866 4447
E-mail: export@sugatsune.co.jp
Website: www.sugatsune-intl.com

SUGATSUNE KOGYO (UK) LTD.
Phone: +44 118 9272 955
F a x : +44 118 9272 871
E-mail: sales@sugatsune.co.uk
Website: www.sugatsune.co.uk

SUGATSUNE AMERICA, INC.
Phone: +1 310 329 6373
F a x : +1 310 329 0819
E-mail: sales@sugatsune.com
Website: www.sugatsune.com

SUGATSUNE SHANGHAI CO., LTD.
Phone: +86 21 3632 1858
F a x : +86 21 3632 1868
E-mail: lamp@sugatsune.com.cn
Website: www.sugatsune.com.cn

ISO9001(Japan Offices and Sugatsune America) and ISO14001(Chiba Production division and Logistic center), certified.