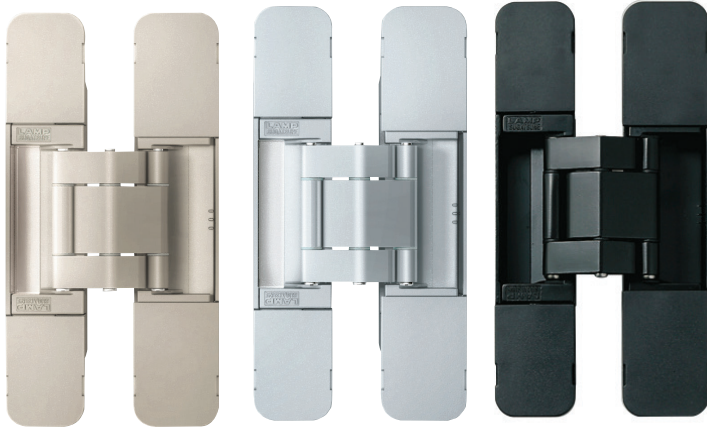


3-WAY ADJUSTABLE CONCEALED HINGE



HES3D-120



HES3D-120DN

HES3D-120DC

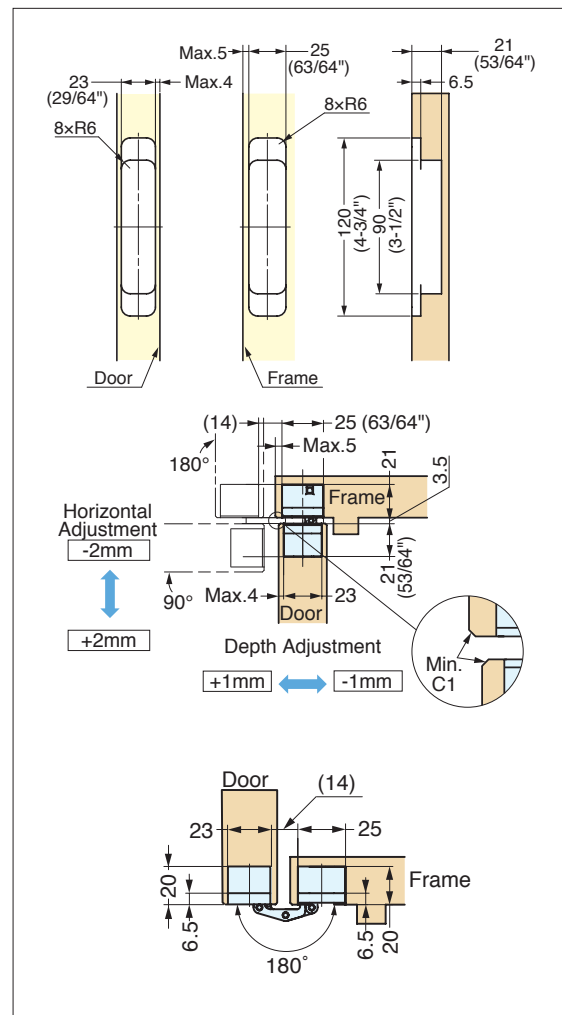
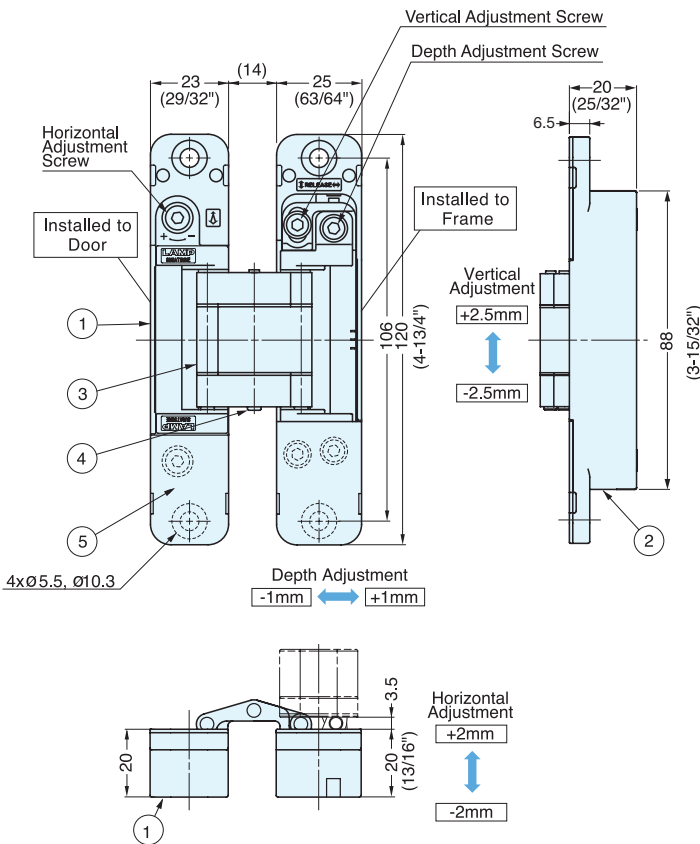
HES3D-120BL

- 3 WAY adjustment function allows vertical, horizontal, and depth adjustment after hinge installed.
- Easy installation and adjustment.
- Successfully passed 300,000 open/close private cycle tests.
- Supplied with steel flat head screw.
- Cover hides all screw heads for clean appearance.
- Door weight: Max. 30 kg (66 lbs)/2 pcs, 40 kg (88 lbs)/3 pcs
- Door Thickness: Min. 29 mm (1-1/8")
- Max. Door Size: H 2400 mm x W 900 mm (H 94-1/2" x W 35-7/16")

Item No.	Finish/Color
HES3D-120DC	Dull Chrome
HES3D-120DN	Dull Nickel
HES3D-120BL	Black

Item No.	Weight (g)	Box (pcs)	Carton (pcs)
HES3D-120DC	380	2	24
HES3D-120DN			
HES3D-120BL			

No.	Part Name	Material	Finish/Color
①	Body	Zinc Alloy	Dull Chrome (DC)
②	Base Frame		Dull Nickel (DN)
③	Arm		Black (BL)
④	Pin	304 Stainless Steel	-
⑤	Cover	ABS	Dull Chrome (DC) Dull Nickel (DN) Black (BL)



Bore Dimensions