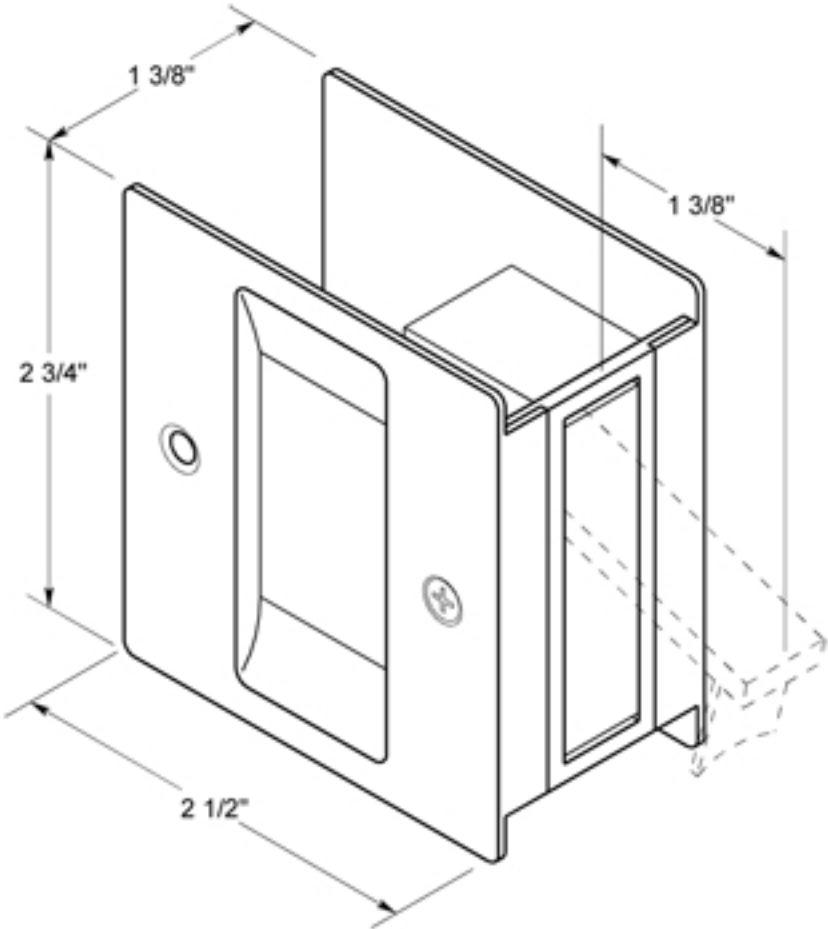
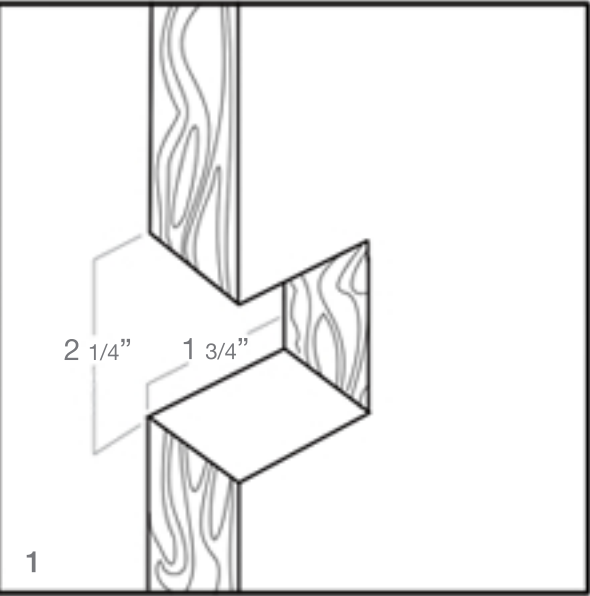


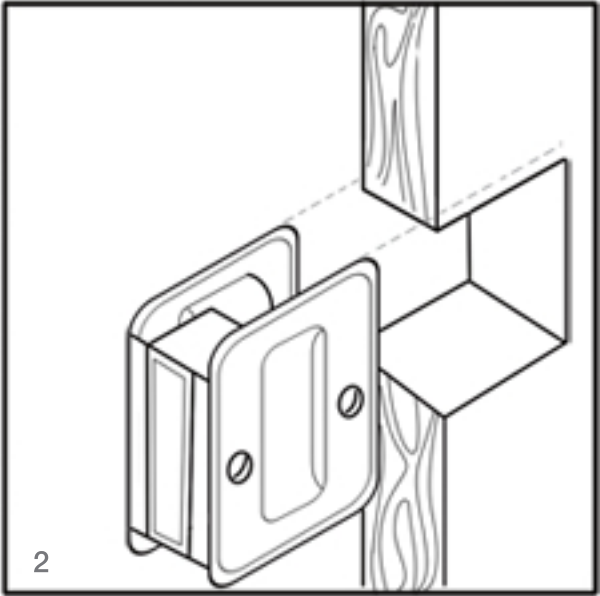
SDP25



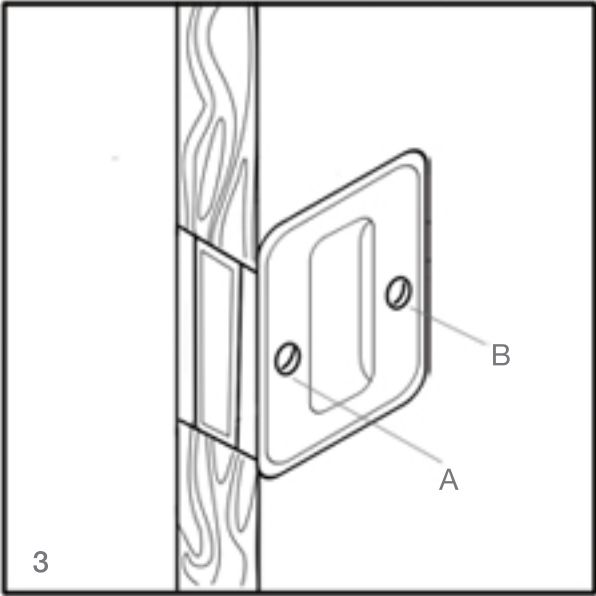
INSTALLATION INSTRUCTIONS / Fits Door Thickness: 13/8"



Cut one simple notch in door.

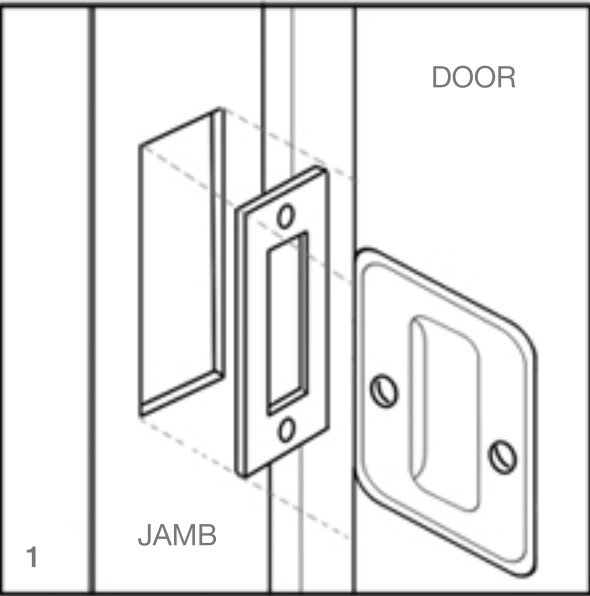


Slip pull into position as shown.

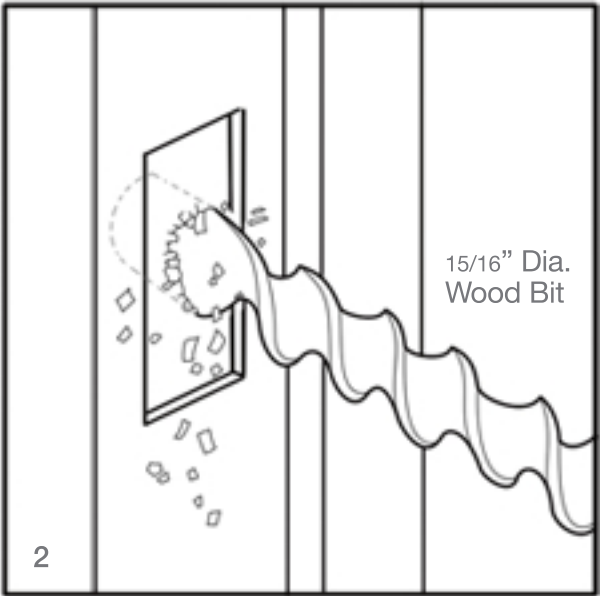


(A) Fasten machine screw which tightens and automatically aligns pull.
(B) Insert wood screw and tighten.

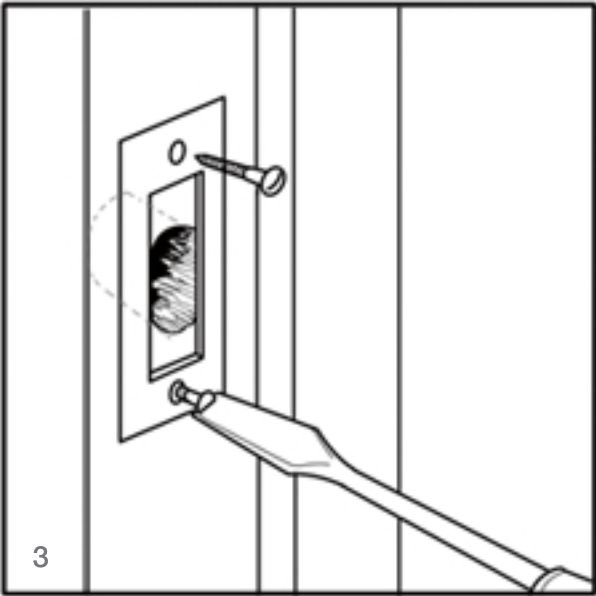
INSTALLATION OF STRIKE PLATE FOR LOCKING SET ONLY



Mark and mortise strike on jamb to correspond to lock position on door
1" x 2 1/4" x 1/16" deep.



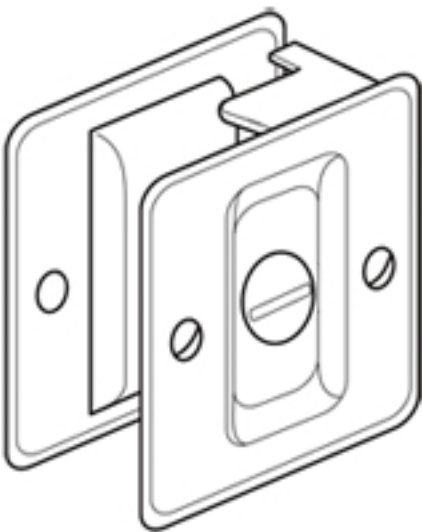
Drill 15/16" diameter hole 1/2" deep
in center of mortise.



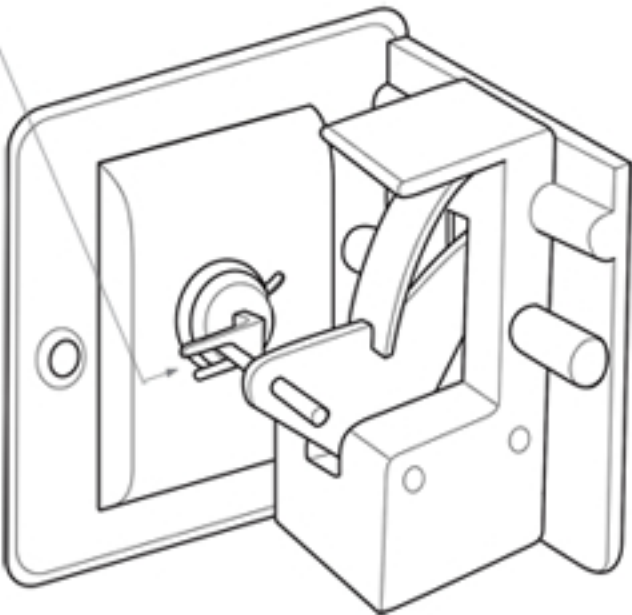
Screw strike plate into position using
#6 x 5/8" long flat head wood screws.

TO ASSEMBLE AFTER REVERSING PLATES

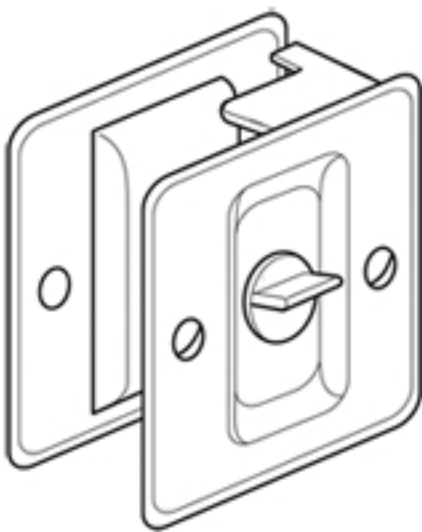
BE SURE FORK ARM ENGAGES ROCKER PIN
WHEN REVERSING PLATES



Before changing plates



With one plate removed



After changing plates

When it is desirable to reverse outside plates on lock assembly, first remove machine screw on each side-change plates from side to side (making sure that fork arm engages rocker pin) and re-assemble.