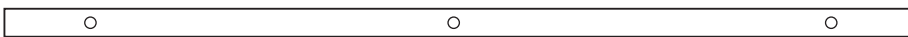
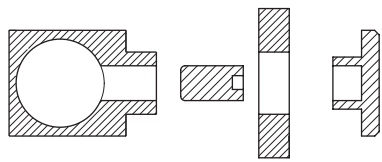


1 Set sliding door fittings **Flatec I**

2 Guide rail

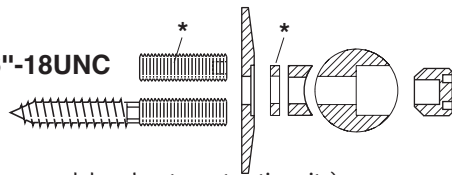


3 Door stoppers



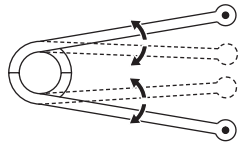
5 Wall fixtures

5/16"-18UNC



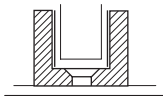
(without screws and dowels, at construction site)
* not included in scope of delivery.

6 Special tool

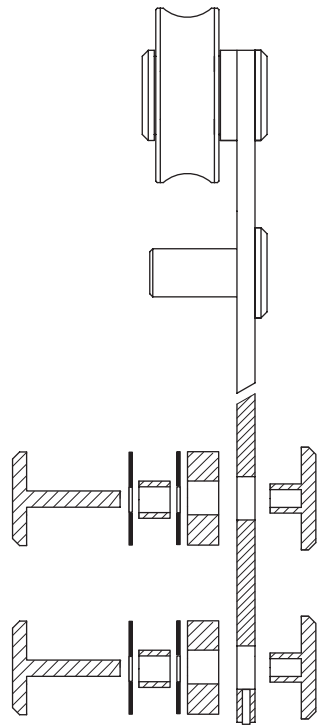


7 Bottom guide

(without screws and dowels,
at construction site)



4 Trolley complete



Comply with all general safety regulations when installing the sliding door fittings!

Installation to be completed by qualified licensed contractor.

Be sure to tighten all screw connections one week after starting to use the sliding door fittings!

Never use scouring agents to clean the sliding door fittings; rather use coincommercially available stainless-steel cleaners!



Attention



Screw on



Screw on



Screw on



Loosen/Tighten



Install



At right angle



Drill



Dowels



Adjust Set



Level



Perpendicular



Measure Mark



Visual inspection



Special-tool



2 people required



Measure



Clarify questions



See Instructions



Secure

USU44_Mont_US

ABP  **beyerle**

Beyerle US L.L.C.

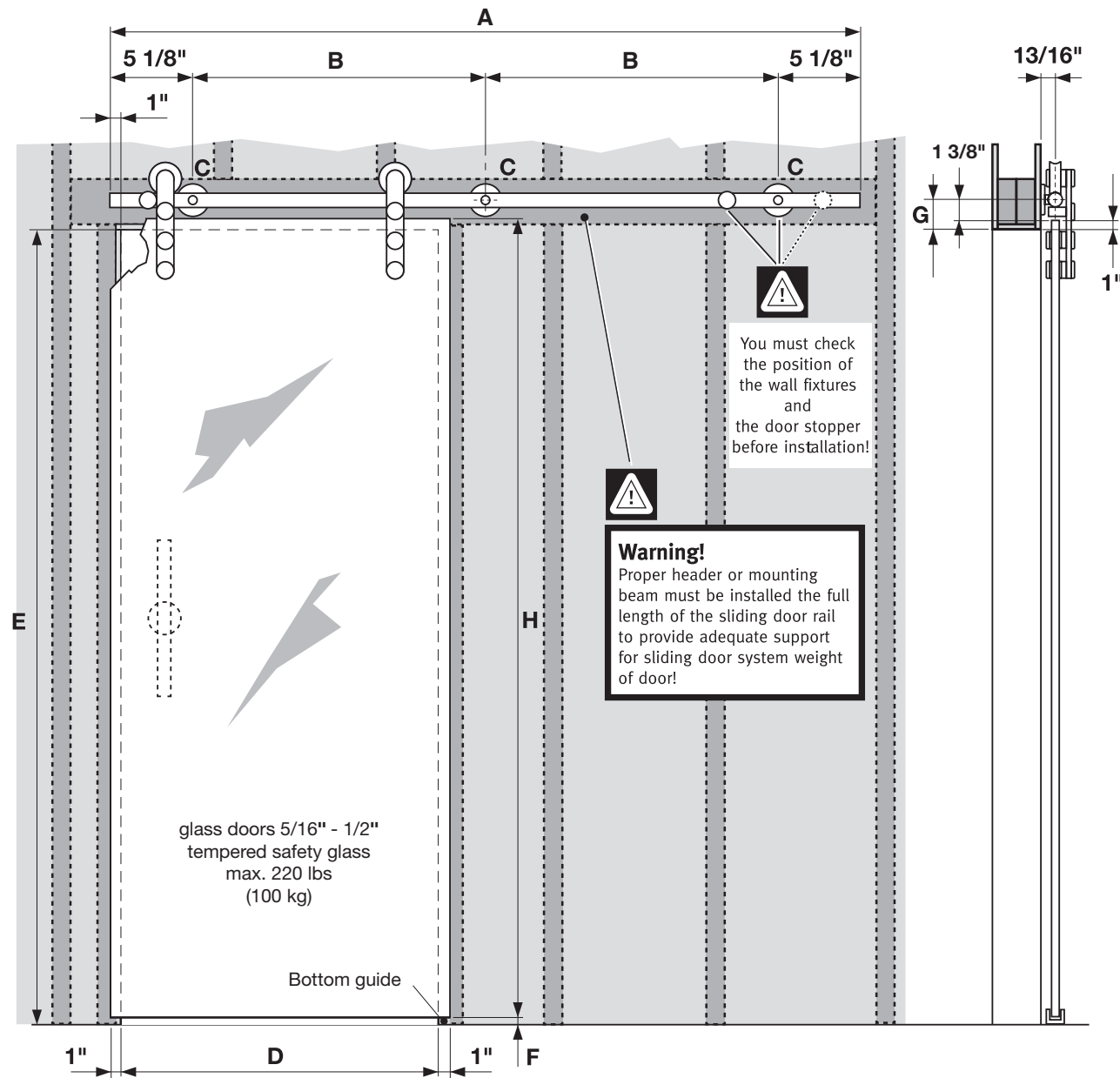
1294 Logan Circle NW, Atlanta, GA 30318

Phone (404) 350-9738, Fax (404) 355-0166, www.beyerle-us.com

Installation instructions

Sliding door fittings **Flatec I**

for glass doors (5/16"-1/2" thickness)



Complete-sets

Set Flatec I Artikel-No.	A inch	B inch	C Each	D inch	E max. inch	F inch	G inch	H max. inch (H=E-F+25)
USU44-1800EF	70 7/8"	30 5/16"	3	29 1/2"-35 7/16"	98 7/16"	1/4"-3/8"	2 3/8"	99 1/8"
USU44-2100EF	82 11/16"	24 1/8"	4	35 13/16"-39 3/8"	98 7/16"	1/4"-3/8"	2 3/8"	99 1/8"
USU44-2300EF	90 9/16"	26 3/4"	4	39 3/4"-44 1/16"	98 7/16"	1/4"-3/8"	2 3/8"	99 1/8"
USU44-2540EF	100"	29 15/16"	4	44 1/2"-49 3/16"	98 7/16"	1/4"-3/8"	2 3/8"	99 1/8"

Right to make technical changes reserved - Dimensions in (inches) - Version 02.2012
© by ABP-Beyerle GmbH

ABP  **beyerle**

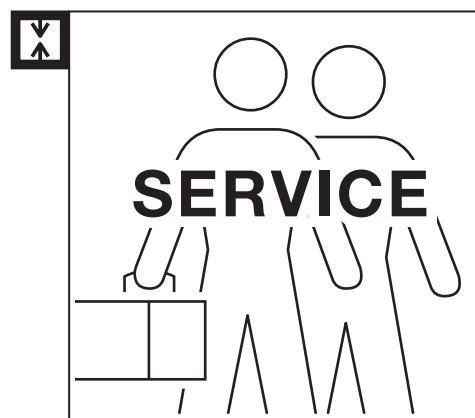


Fig. 1

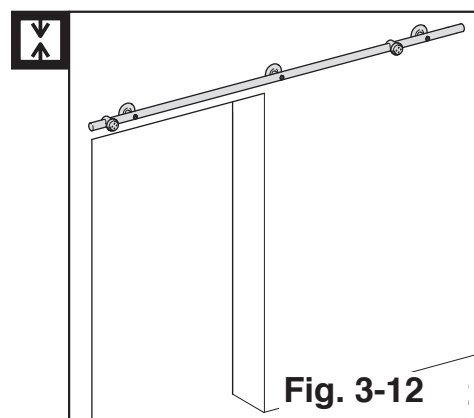


Fig. 2

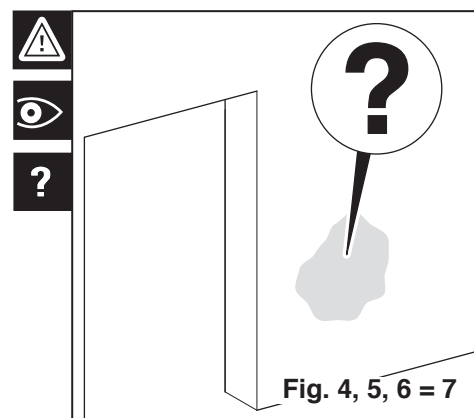


Fig. 3

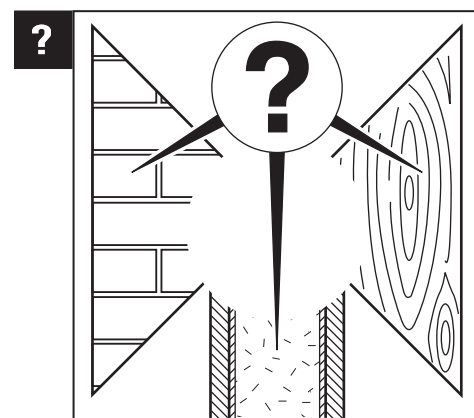


Fig. 4

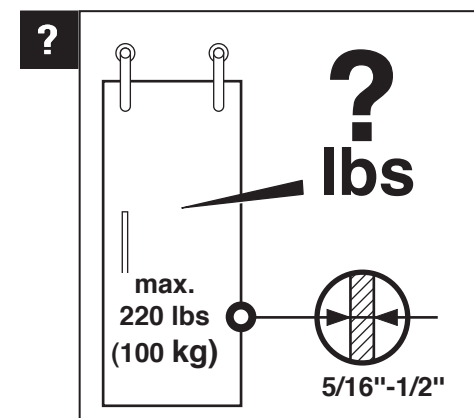


Fig. 5

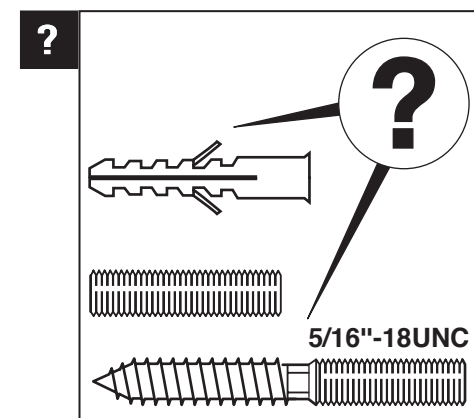


Fig. 6

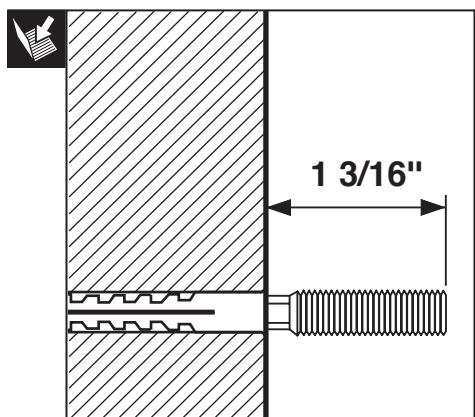


Fig. 7

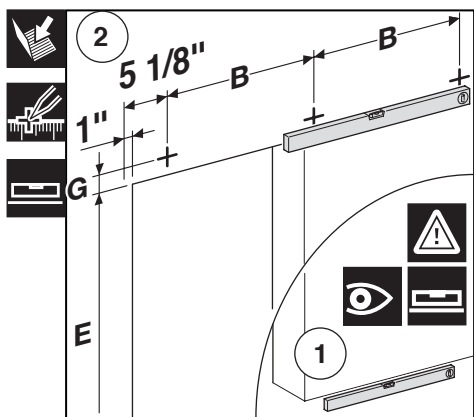


Fig. 8

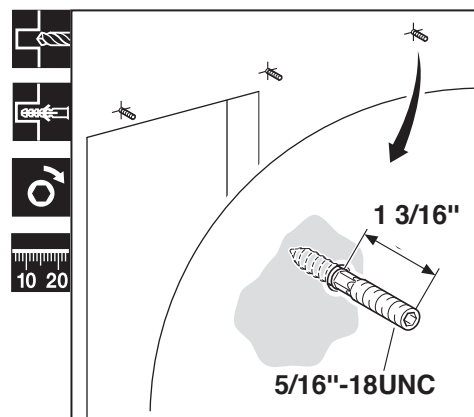


Fig. 9

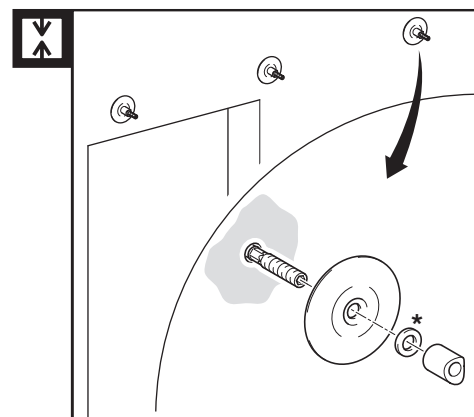


Fig. 10

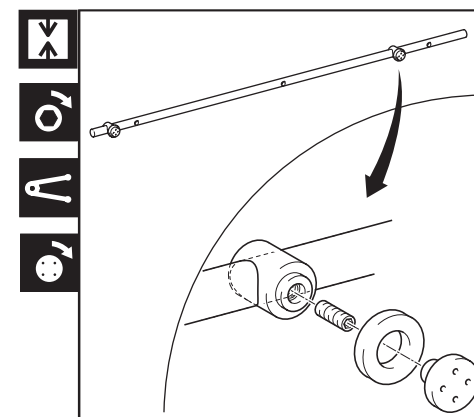


Fig. 11

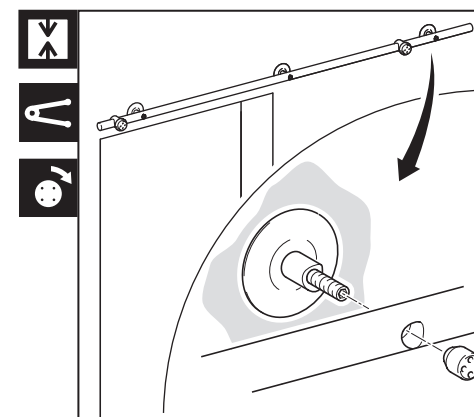


Fig. 12

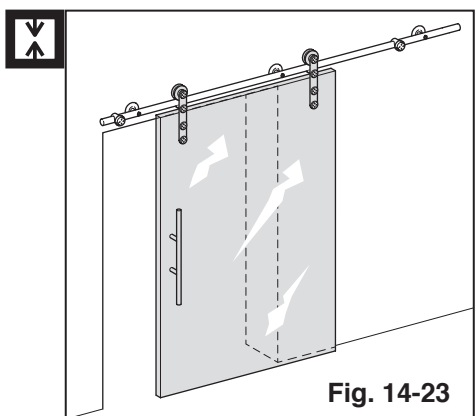


Fig. 13

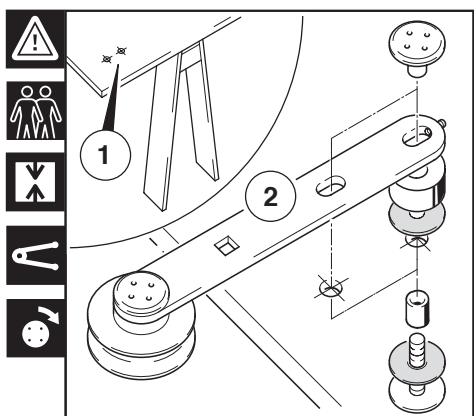


Fig. 14

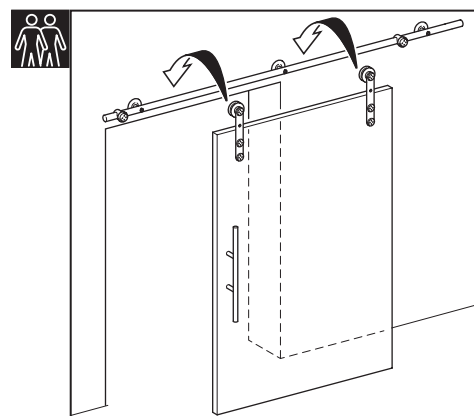


Fig. 15

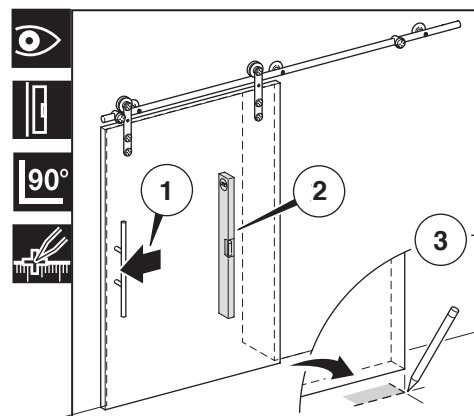


Fig. 16

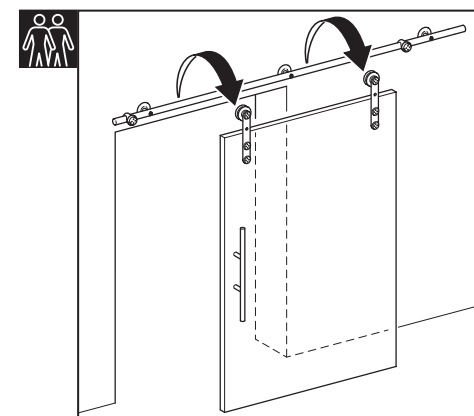


Fig. 17

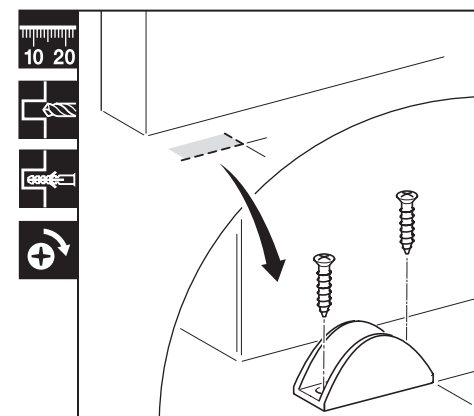


Fig. 18

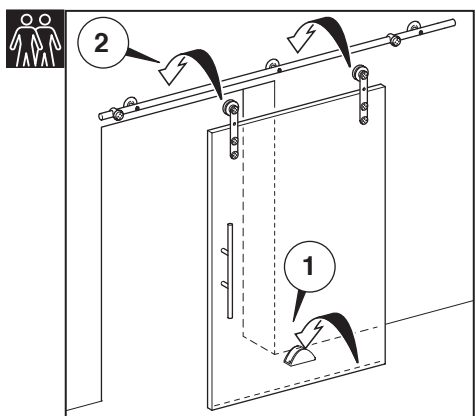


Fig. 19

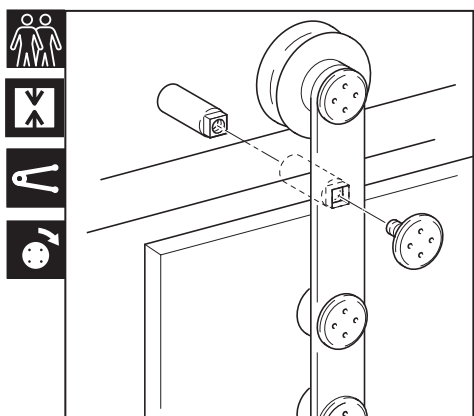


Fig. 20

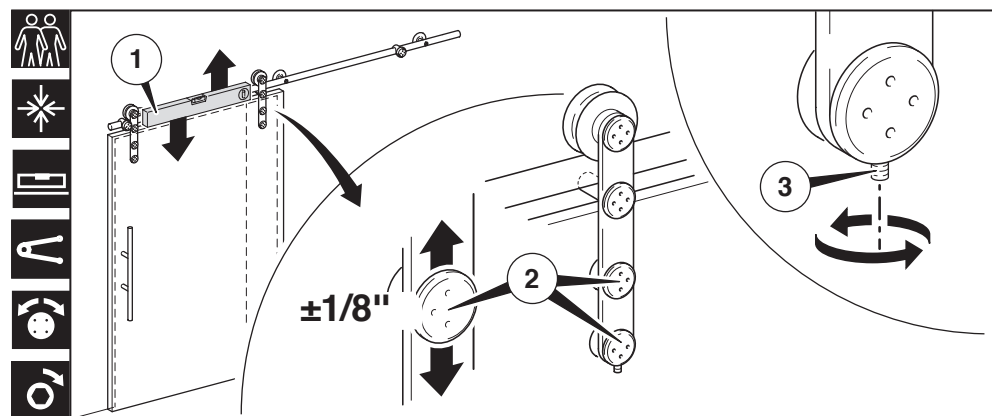


Fig. 21

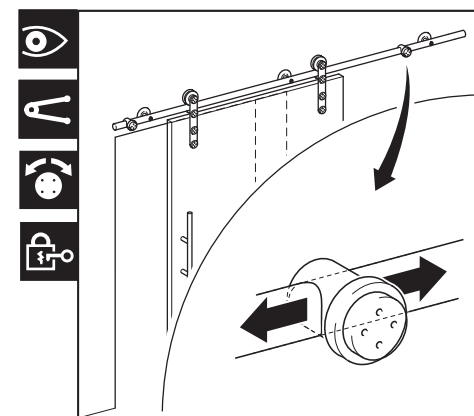


Fig. 22

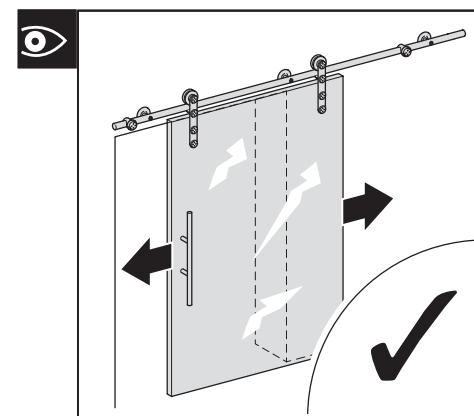
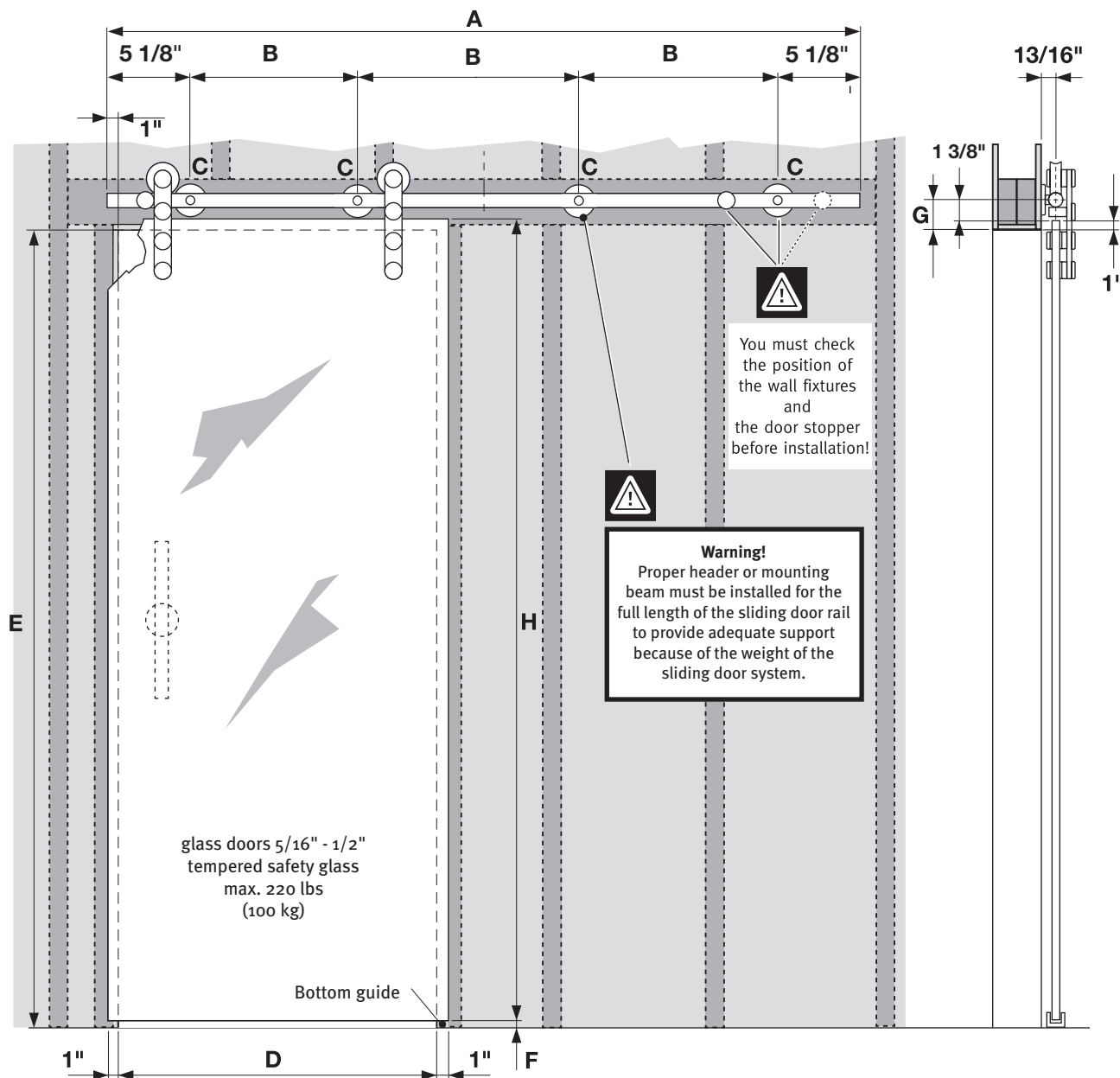


Fig. 23

Planning guide

Sliding door fittings Flatec I

for glass doors ($5/16''$ - $1/2''$ thickness)



Complete-sets

Set Flatec I Artikel-No.	A inch	B inch	C Each	D inch	E max. inch	F inch	G inch	H max. inch (H=E-F+1")
USU44-1800EF	70 7/8"	30 5/16"	3	29 1/2" – 35 7/16"	98 7/16"	1/4"–3/8"	2 3/8"	99 1/8"
USU44-2100EF	82 11/16"	24 1/8"	4	35 13/16" – 39 3/8"	98 7/16"	1/4"–3/8"	2 3/8"	99 1/8"
USU44-2300EF	90 9/16"	26 3/4"	4	39 3/4" – 44 1/16"	98 7/16"	1/4"–3/8"	2 3/8"	99 1/8"
USU44-2540EF	100"	29 15/16"	4	44 1/2" – 49 3/16"	98 7/16"	1/4"–3/8"	2 3/8"	99 1/8"

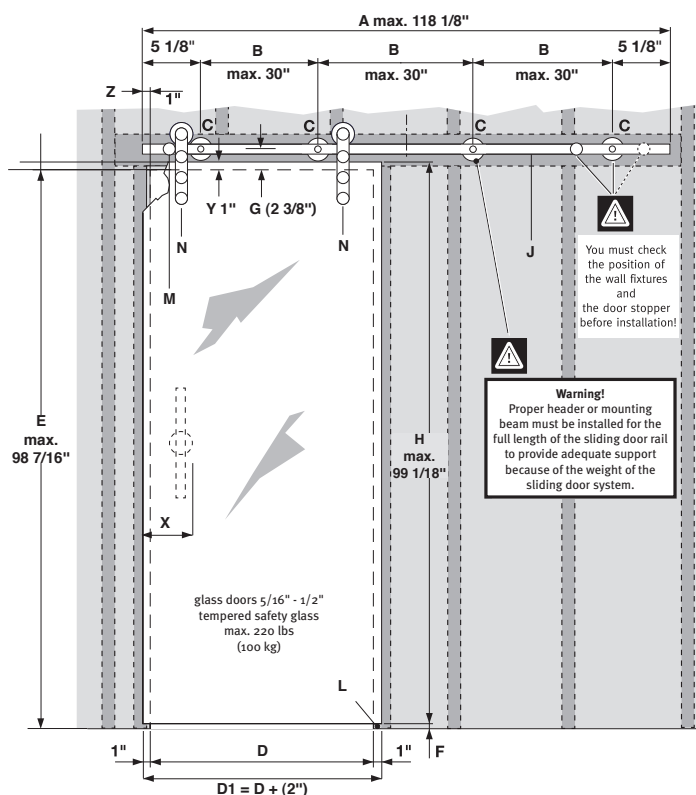
Sliding door fittings **Flatec I**

for glass doors (5/16" - 1/2" thickness) - 1 glass door

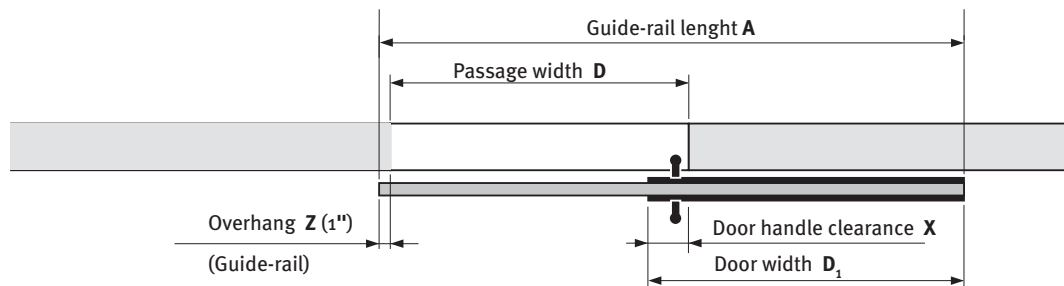
Manufacturing dimensions (special model)												
inches		Each	inches						lbs	Each		
A	B	C	D	D ₁	E	F	G	H	load bearing capacity of the guide rail J	L	M	N
					max. 98 7/16"	1/4"-3/8"	2 3/8"	max. 99 1/8" (H = E - F + Y)		1	2	2

- A = Guide-rail length
- B = Drill hole clearance
- C = Wall fixture
- D = Passage width
- D₁ = Door width
- E = Passage height
- F = Door - floor clearance
- G = Fastening clearance
- H = Door height
- J = Load-bearing capacity of the guide rail
- L = Bottom guide
- M = Door stopper
- N = Trolley
- X = Door knob clearance
- Y = Door height overhang
- Z = Guide-rail overhang

() = recommended!



Calculation for guide-rail length A for 1 door



$$\text{Overhang Z} + \text{Passage width D} + \text{Door width D}_1 - \text{Door handle clearance X} = \text{Guide-rail length A}$$

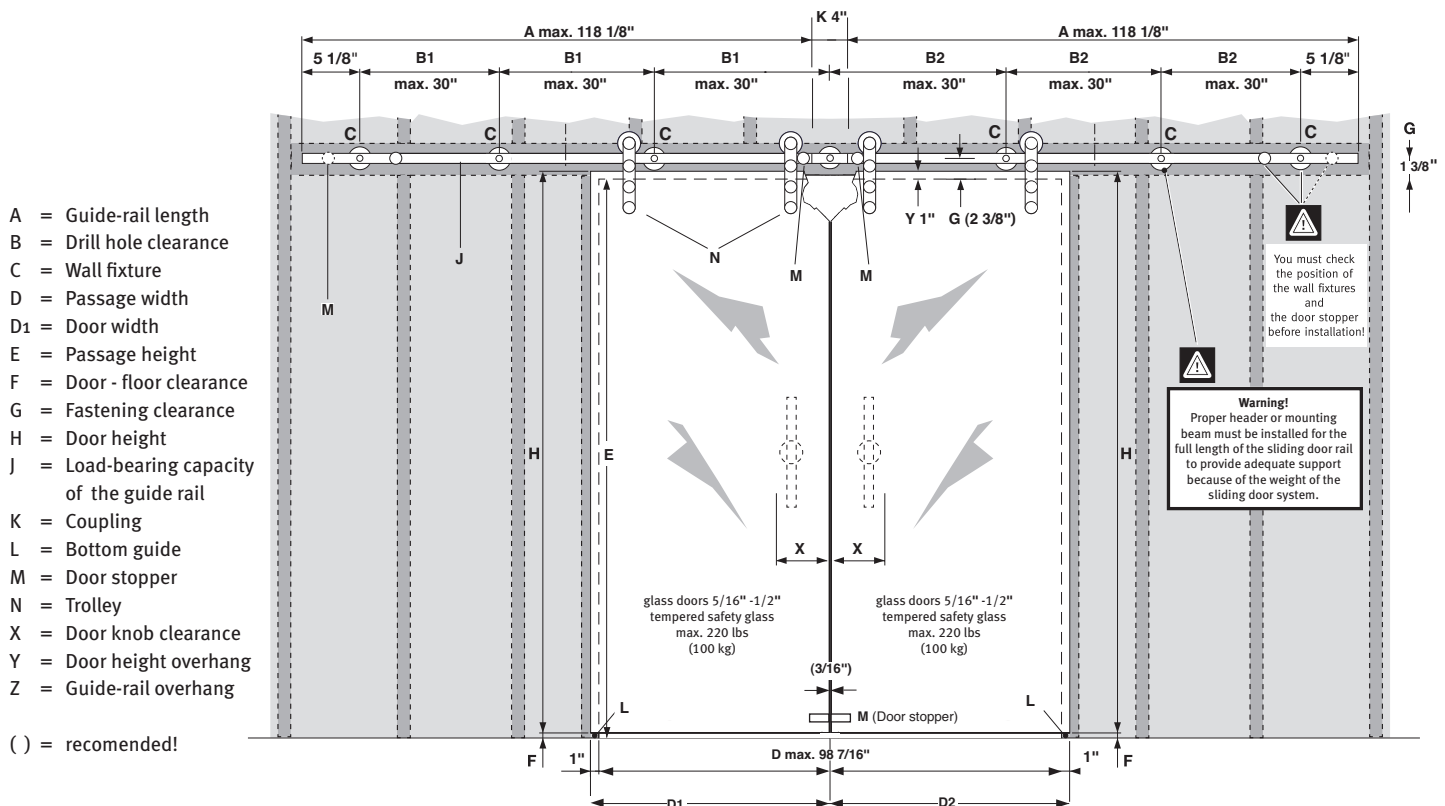


Make door handle clearance so that fingers do not get pinched when the door is used! See page 5.

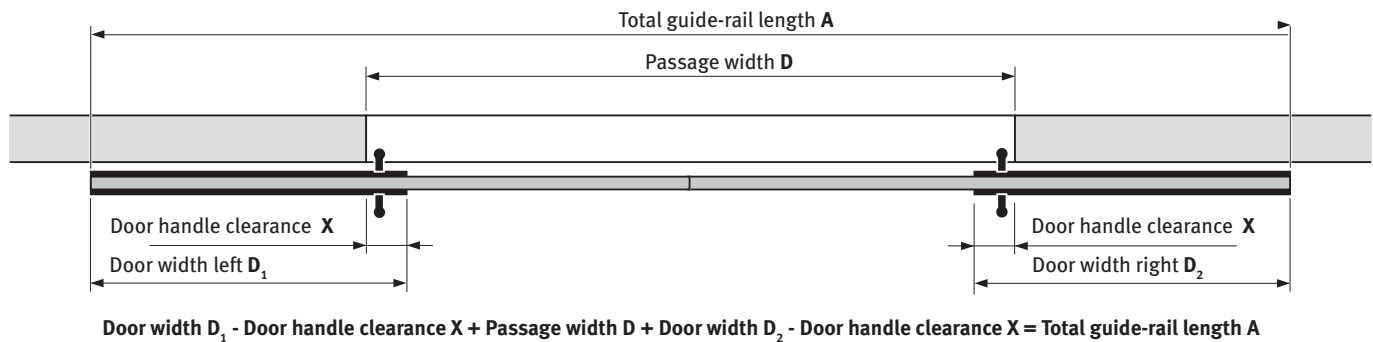
Sliding door fittings **Flatec I**

for glass doors ($5/16''$ - $1/2''$ thickness) - 2 glass doors

inches		Each Manufacturing dimensions (special model)										lbs		Each			
A	B1	B2	C	D	D ₁	D ₂	E max. 98 7/16"	F 1/4"- 3/8"	G	H max. 99 1/8" (H = E - F + Y)		load bearing capacity of the guide rail J		K	L	M	N
									2 3/8"					1	2	4	4



Calculation for total guide-rail length A for 2 doors

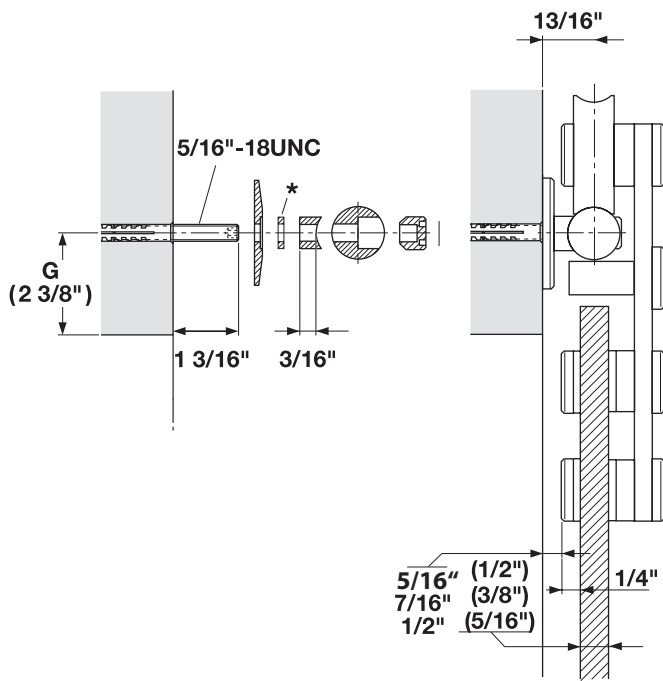


Make door handle clearance so that fingers do not get pinched when the door is used! See page 5.

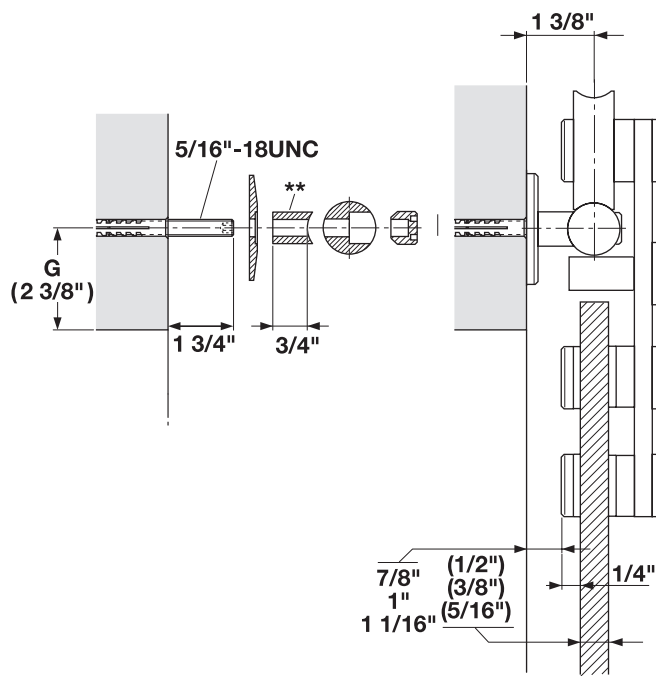
Sliding door fittings **Flatec I**

for glass doors ($5/16''$ - $1/2''$ thickness) - Wall fixture

Standard installation




Installation with baseboards and trim



* Compensation disk 2, 5 and 10 mm

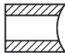
To compensate for wall unevenness,
order separately.

(Only 1 piece per wall fixture!)

	Art.-No.	inches
	USO216-2EF	1/16"
	USO216-5EF	3/16"
	USO216-10EF	3/8"

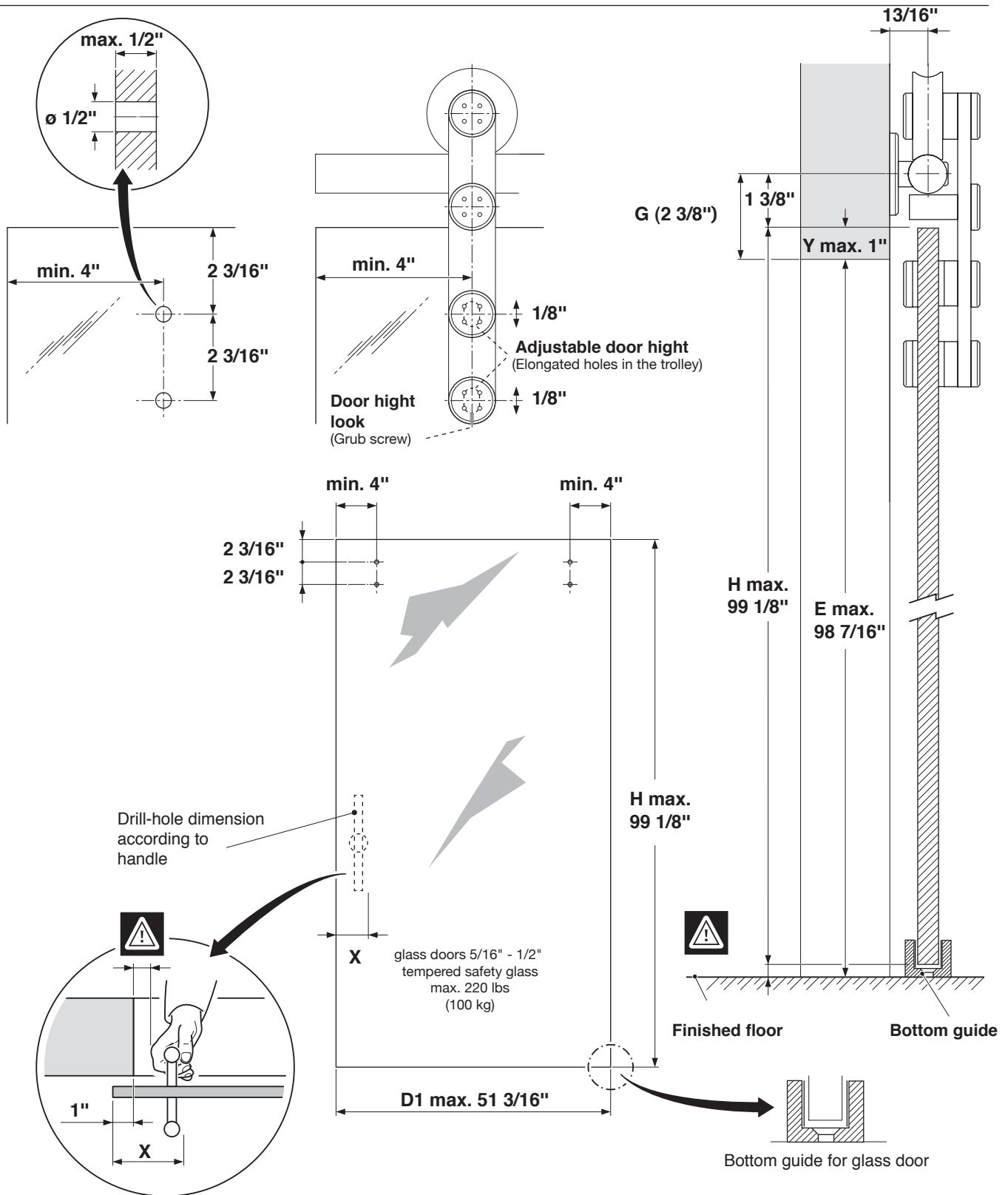
** Spacers

order separately!

	Art.-No.	inches
	USO226-19EF	3/4"

Sliding door fittings **Flatec I**

for glass doors ($5/16''$ - $1/2''$) - Preparation of glass door



Make door handle clearance so that fingers do not get pinched when the door is used!

Sliding door fittings Flatec I

for glass doors (5/16" - 1/2" thickness)

Required system parts

Please refer to the catalogue for article no's and models!

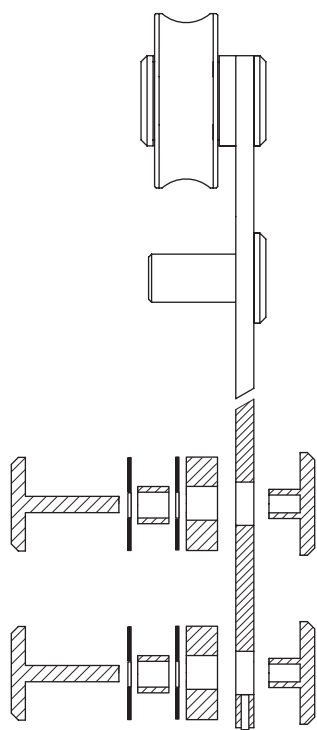
A Guide rail ø 1 "



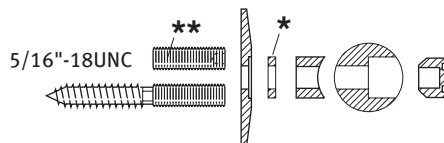
A1 Guide rail ø 1 " for guide rail couplings



N Trolley complete

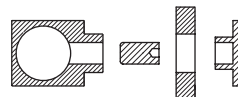


C Wall fixtures

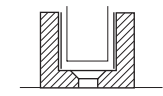


(without screws and dowels, at construction site)
* not included in scope of delivery.

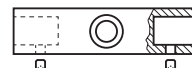
M Door stoppers



L Bottom guide (without screws and dowels, at construction site)



K Guide rail coupling



6 Special tool

