



# SHS

SPOKANE  
HARDWARE  
SUPPLY, INC

*Builder's Hardware Specialists Since 1945*

---



# hardware hut

**COMMERCIAL / DIVISION 8**

**MANUFACTURING SOLUTIONS SINCE 1968**



# HARDWARE SOLUTIONS

Our in-house locksmith can meet your keying needs.



**CYLINDRICAL LOCKS**



**DOOR CLOSERS**



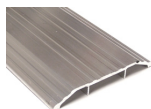
**HINGES**



**EXIT DEVICES**



**VISION KITS**



**THRESHOLDS**

We stock grade 1 and grade 2 cylindrical locks, exit devices, closers, thresholds, weatherstripping and much more.

Our experienced sales team can assist you with selecting the right hardware for your job.

## Our In-Stock Hardware Brands:



**GLYNN-JOHNSON**

**LCN®**



**VON DUPRIN®**



**IVES®**



**ASSA ABLOY**



## DOOR SOLUTIONS

Stock doors are 18 gage cold rolled steel, polystyrene core, Amweld hinge/lock locations and can be fire rated for up to 3 hours.

### ENVOY / ULTRADOR

- 1-3/4" (44.4 mm) insulated full flush design -rated for light to extra-heavy-duty use.
- Core is chemically bonded to face sheets providing total surface support.
- Mechanically interlocked, hemmed vertical edge seams or center edge seam for added strength and rigidity.
- 7 gauge (4.2 mm) steel hinge reinforcement.
- Inverted end channels welded to both face sheets.
- Rust inhibitive prime paint base coat meets ANSI A250.10



Our stock doors are 2' to 4' in width  
and 6' 8" to 7' in height.  
8' heights are available in 3' and 4' widths only.

# FRAME SOLUTIONS

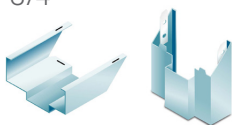
Stock frames are 16 gage cold rolled steel, unequal rabbet Amweld hinge/strike locations and can be fire rated up to 3 hours.

We carry a variety of anchor options.

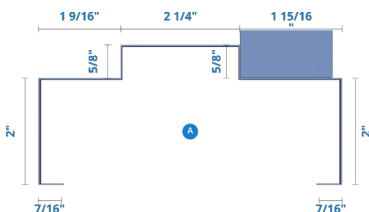
Our in-house welding team can create side lights, borrowed lights and transoms.

## Ceco SU Profile:

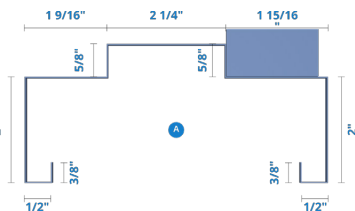
- Welded or Knock-Down
- Reinforcement & Preps
- Jamb Depths:
  - 5-3/4"
  - 6-1/4"
  - 6-3/4"
  - 7-3/4"
  - 8-1/4"
  - 8-3/4"



### SU PROFILE

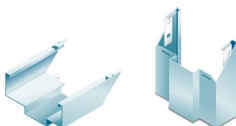


### DU PROFILE



## Ceco DU Profile:

- Drywall Knock-Down
- Reinforcement & Preps
- Jamb Depths:
  - 5-3/4"





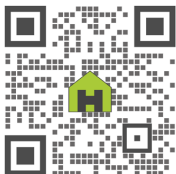
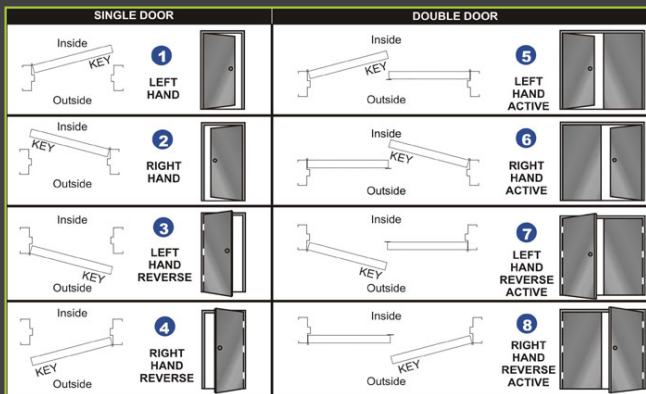
# CONTACT OUR SALES TEAM

SPOKANE HARDWARE SUPPLY, INC.

2001 E. TRENT AVE. SPOKANE, WA 99220

(509) 232-1797 (800) 888-1663 x8051

Mitch Ongers	> Mitch@spokanehardware.com
Brooke Grisafi	> Brooke@spokanehardware.com
Craig Silver	> Craig@spokanehardware.com
John Hudson	> John@spokanehardware.com
Jarrett Buck	> Jarrett@spokanehardware.com



 **Scan Me**

Scan our QR Code  
to access our  
Hollow Metal  
Quote Form  
and our Door  
Replacement Form